

Draw each under microscope (low & high)

Name:

Bacteria Shapes

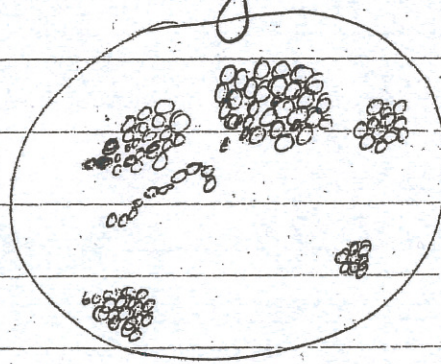
Coccus

(circle)

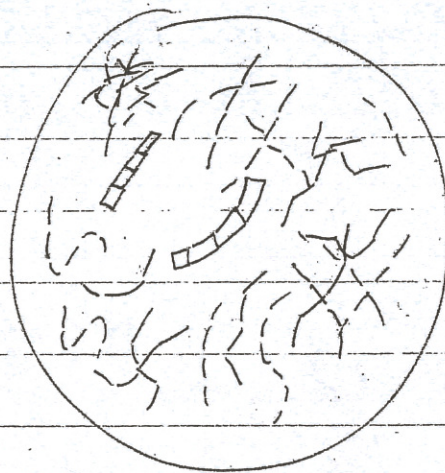
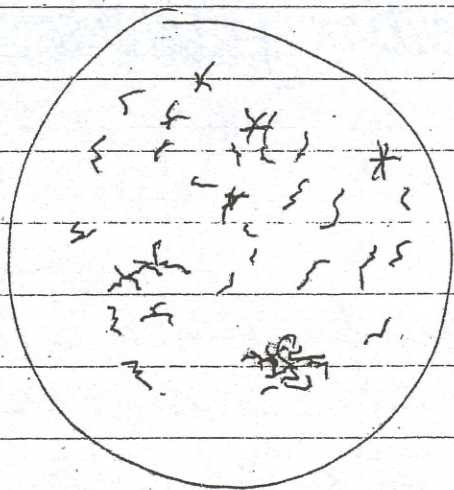
Low



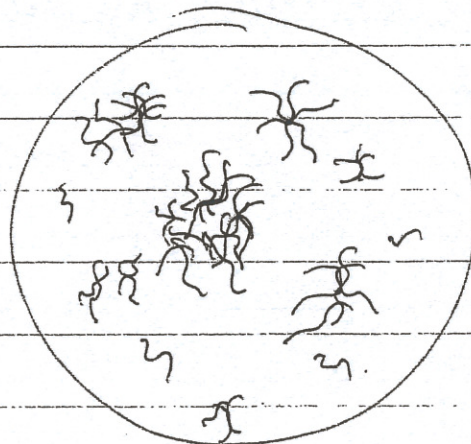
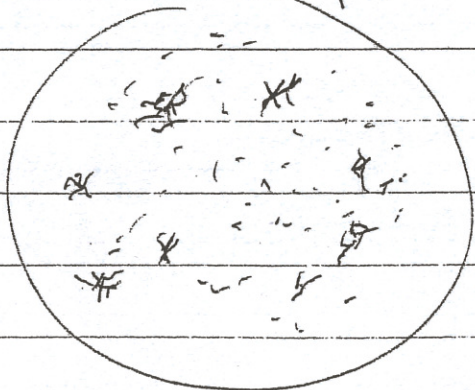
High



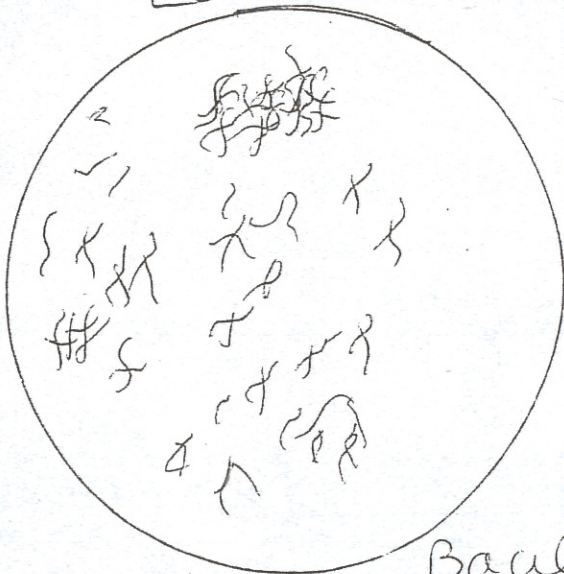
Bacillus (rod)



Spirillum (spiral)



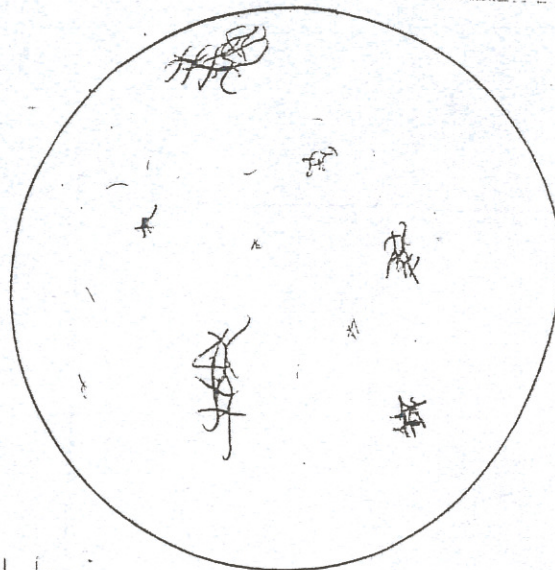
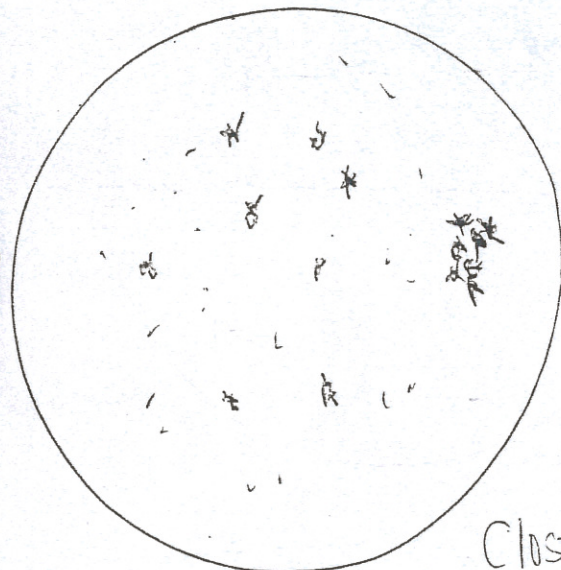
LOW



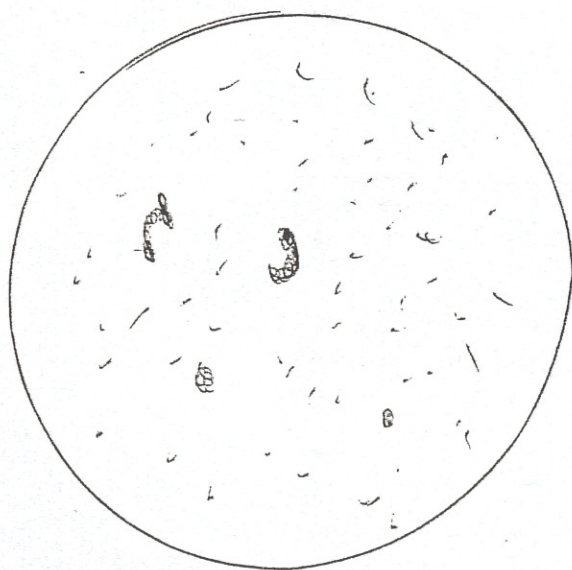
HIGH



Bacillus anthracis

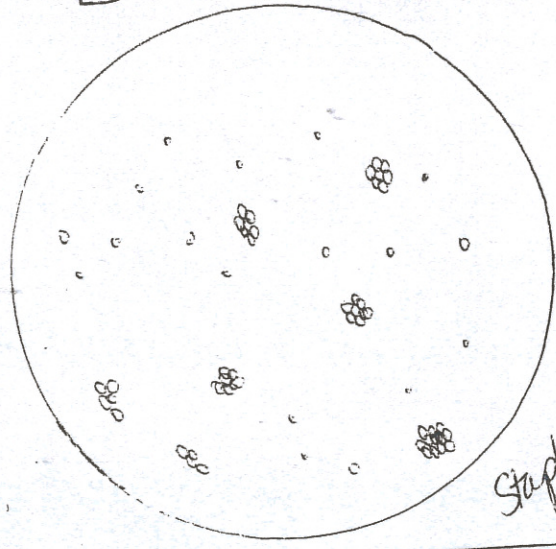


Clostridium tetani



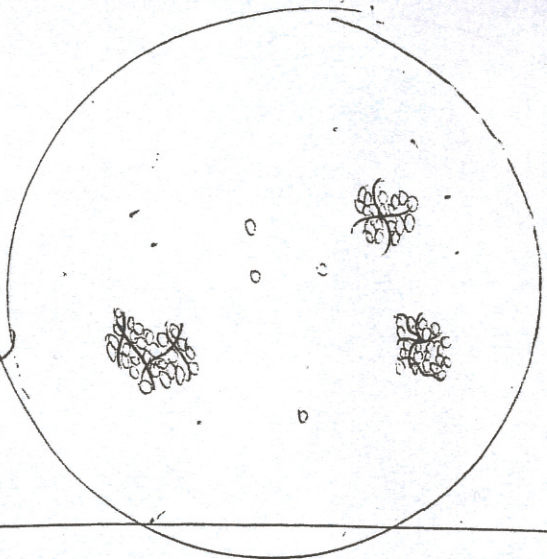
Mycobacterium

LOW

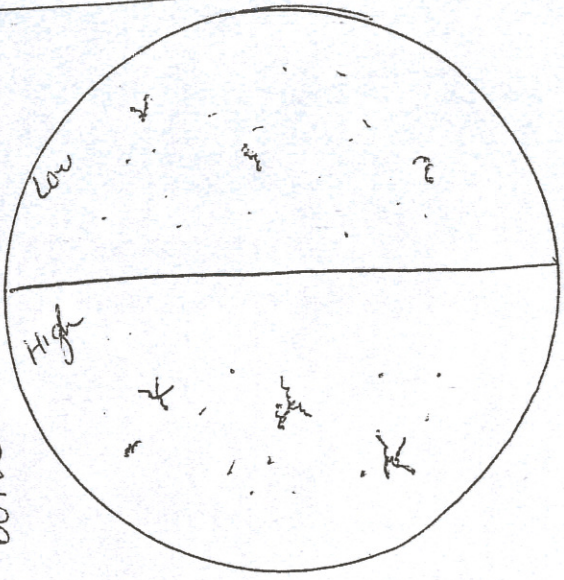


Staphylococcus aureus

HIGH



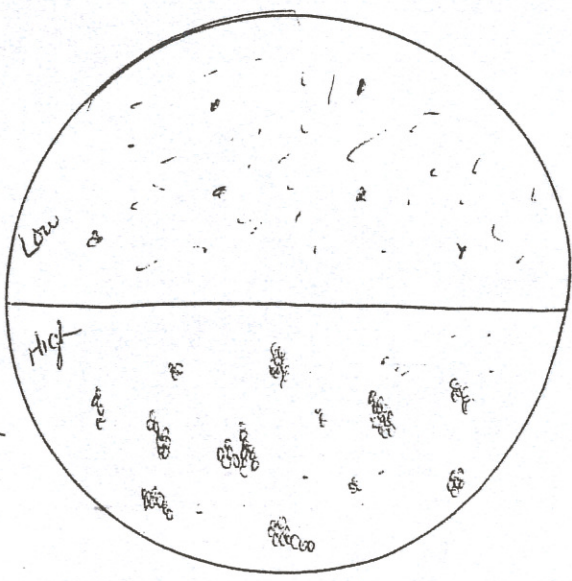
Clostridium botulinum



Streptococcus pyogenes



Corynebacterium diptheriae



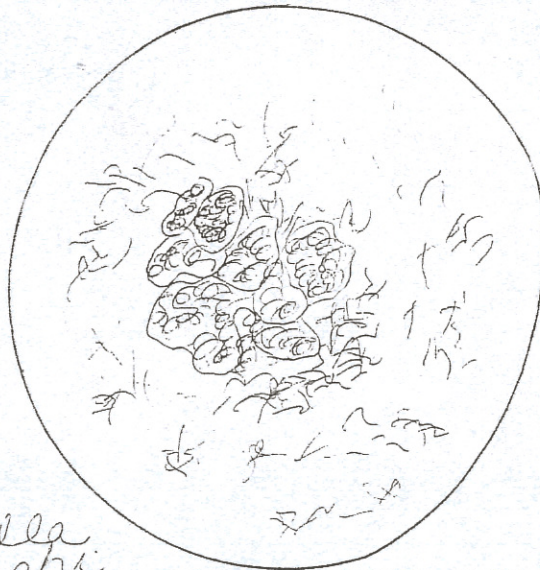
Neisseria Gonorrhoeae



Low



HIGH



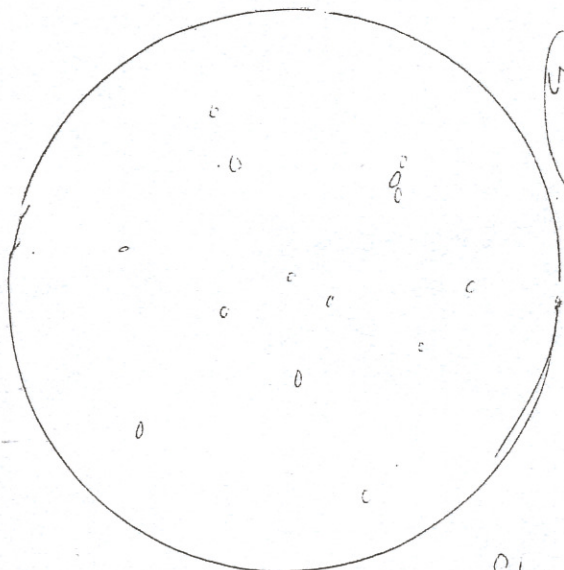
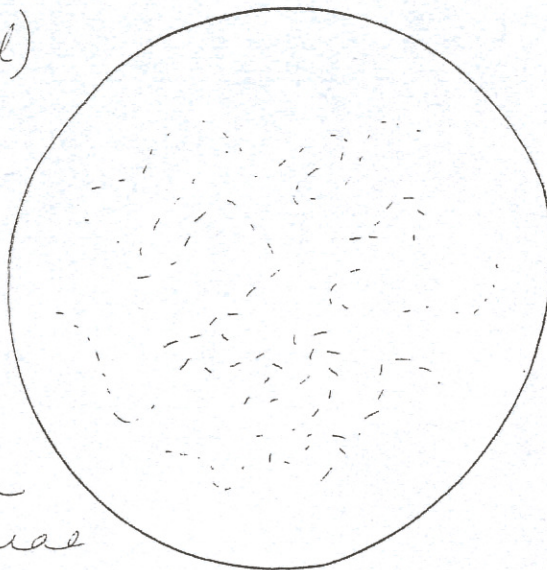
Salmonella
typhi

(hard
to find)



pink
dots
all
over

Shigella
dysenteriae



(very
faint
purple)

Streptococcus
pneumoniae

